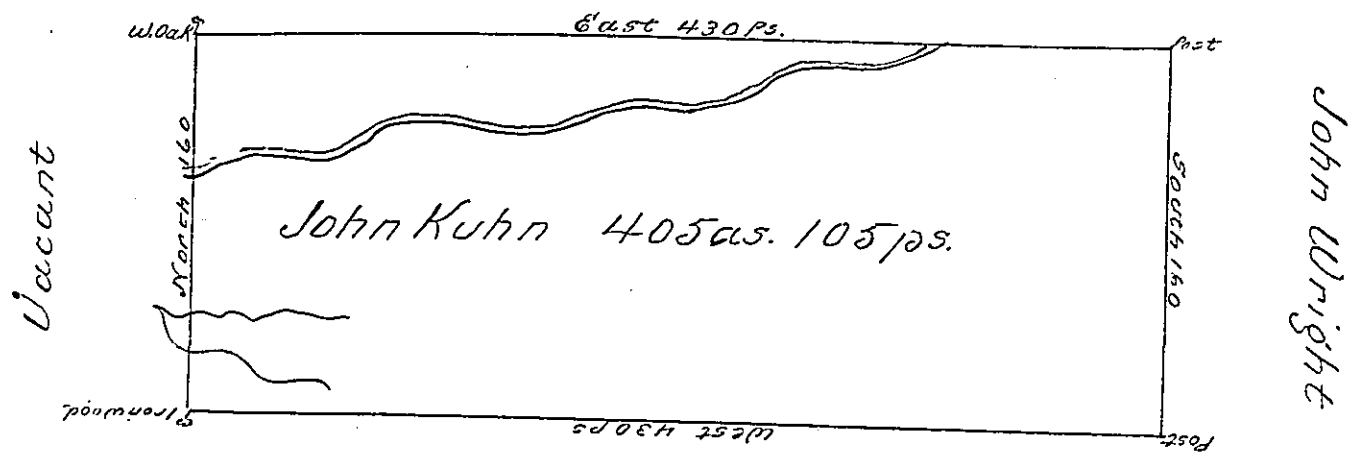


John Haldeman



John Wright

John Dunwoody

Situated on the Waters of Two Lick Creek in Wheatfield Township Westmoreland County: Containing 405 acres & 105 perches & allowance of Six pcent for Roads &c. Surveyed for John Kuhn the 26th day of Novemr 1794 on Warrant dated the 3d. day of May 1793.

Daniel Broadhead Esqr. S.G.

James Ross D. S.

IN TESTIMONY that the above is a copy of the original remaining on file in the Department of Internal Affairs of Pennsylvania, made conformably to an Act of Assembly approved the 16th day of February, 1833, I have hereunto set my Hand and caused the Seal of said Department to be affixed at Harrisburg, this fifth day of September 1900

James W. Latta
Secretary of Internal Affairs.